

## Entering and using contacts from Outlook into my Yealink Phone

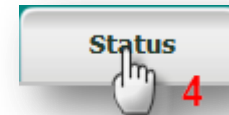
1. Press the silver OK button to obtain the IP Address. (ex. 192.168.1.XXX)
2. Enter the IP address into a your web browser URL address bar.
3. Username/Password = Admin/Admin
4. Select Status from the tab menu in the upper part of the screen
5. If the current firmware on your phone is X.60.0.80 (X = the model you're are using, see below) or higher, please proceed to **step 11**. If you don't have the most up to date firmware version, click below to download the current firmware version for the following Yealink phones:
  - I. Yealink T-20: [9.60.0.80](#)
  - II. Yealink T-22: [7.60.0.80](#)
  - III. Yealink T-28: [2.60.0.80](#)



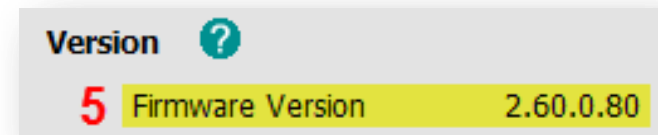
2

http://192.168.1.224/

3

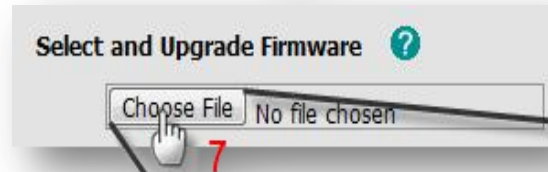
4



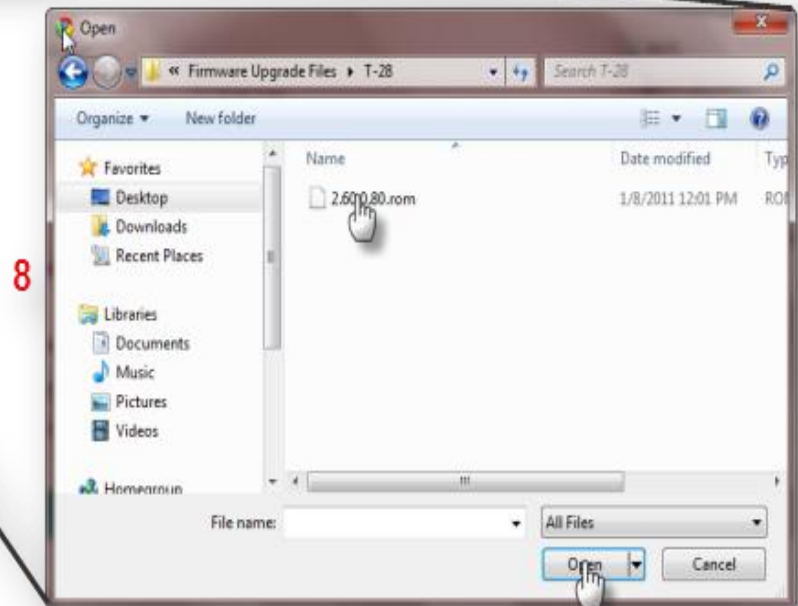
6. Click the “Upgrade” tab



7. Click “Choose File”



8. Browse your computer for the Firmware File you’ve just downloaded. Click on the file and then click “Open”.



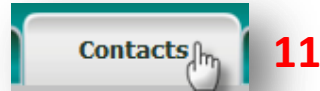
9. Click the “Upgrade” button



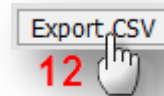
10. The Firmware upgrade will take about 5 minutes so please do not unplug or power off your phone until the loading is complete.

Now that you have successfully upgraded the firmware version on your phone, we can now begin to load the contacts from Outlook into your phone.

11. Click “Contacts” tab.



12. Click “Export CSV”



13. A CSV file will download and open up (See example). You will use this template to fill in the data from your Outlook contacts information. (hint: You will need to export your contacts from your Outlook as a CSV file, cut and paste the necessary information from the Outlook CSV file to the Yealink Contacts CSV file template)

	A	B	C	D	E	F	G
1	DisplayName	OfficeNumber	MobilNumber	OtherNumber	Line	Ring	Group
2	<b>Example CSV Template</b>						
3							
4							
5							

14. Click “Choose File”

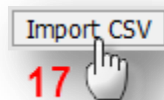


15. Select the CSV file you’ve just created from your computer

16. Click “Open”



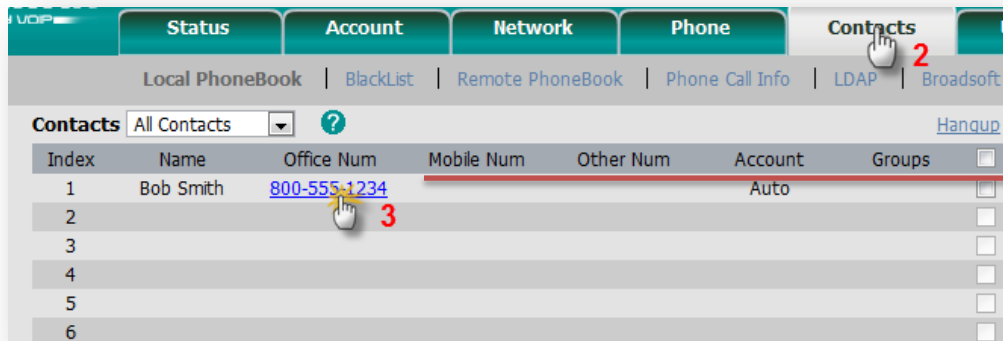
17. Click “Import CSV”



## Using your newly added contacts from your Yealink Phone:

There are two ways to dial your contacts:

- a. Using the directory from your phone
  - i. Press the directory button
  - ii. Choose Local Directory
  - iii. Select Contacts
  - iv. Choose your contact from the list and the phone automatically dials the phone number associated to that contact.
- b. Click to dial from the Contacts tab
  - i. Login to your Yealink telephone (Steps 1-4 above)
  - ii. Select contacts
  - iii. Click on the phone number for the contact you are trying to reach. Your phone will automatically dial the number clicked.



Index	Name	Office Num	Mobile Num	Other Num	Account	Groups	
1	Bob Smith	<a href="#">800-555-1234</a>			Auto		<input type="checkbox"/>
2							<input type="checkbox"/>
3							<input type="checkbox"/>
4							<input type="checkbox"/>
5							<input type="checkbox"/>
6							<input type="checkbox"/>

